

# COMPANY OVERVIEW



For more information visit [www.dsqsurvey.com](http://www.dsqsurvey.com)

DSQ Pty Ltd provides expert Land Surveying services throughout Australia.

The DSQ team has vast knowledge and experience in many facets of the Spatial Science Industry which allows us to upsize quickly when projects require the flexibility and additional manpower. Our experienced team includes Cadastral Surveyors, Engineering Surveyors, GIS, Drafters, HSSE, Finance and Administration personnel. Our team are qualified and registered with various Boards throughout Australia.

## PROFESSIONAL SERVICES

- Cadastral Surveys
- Engineering Surveys
- Land Development and Titling
- GIS, Mapping & Spatial, Data Management
- Hydrographic Surveys
- Roads, Rail & Pipeline Infrastructure
- Dilapidation Surveys
- Lidar & Mapping
- Laser Scanning
- Machine Guidance

## MEMBERSHIPS

- Geospatial Council of Australia
- Australian Pipeline & Gas Association (APGA)
- The Urban Design Institute of Australia (UDIA)

## INTEGRATED MANAGEMENT SYSTEMS

DSQ Pty Ltd operates under an Integrated Management System (IMS) aligned with International Standards for Quality, Safety and Environmental Management. The IMS is a third-party accredited and audited annually under JAS-ANZ by Compass Assurance Services Pty Ltd, with certification applying to the Head Office at Warana.

Quality Assurance: ISO 9001:2015

Safety: ISO 45001:2018

Environmental: ISO 14001:2015



# KEY CONTACTS



For more information visit [www.dsqsurvey.com](http://www.dsqsurvey.com)



**BLAIR FFITCH**

Director & Cadastral Surveyor  
P 0424 141 430  
E [blair.fffitch@dsqsurvey.com](mailto:blair.fffitch@dsqsurvey.com)



**TONY PIKE**

Director & Cadastral Surveyor  
P 0411 878 600  
E [tony.pike@dsqsurvey.com](mailto:tony.pike@dsqsurvey.com)



**NEIL SEVERNS**

Director & Consulting Surveyor  
P 0411 234 177  
E [neil.severns@dsqsurvey.com](mailto:neil.severns@dsqsurvey.com)

## OUR OFFICE LOCATIONS

### SUNSHINE COAST

26 Premier Circuit  
Warana QLD 4575

### CHINCHILLA

4 Inverai Road  
Chinchilla QLD 4413

### TOOWOOMBA

25/489-491 South Street  
Harristown QLD 4350

### DALBY

6/66 Drayton Street  
Dalby QLD 4405



EMAIL [mail@dsqsurvey.com](mailto:mail@dsqsurvey.com)

PHONE (07) 5437 8555

[www.dsqsurvey.com](http://www.dsqsurvey.com)



# CAPABILITY STATEMENT



For more information visit [www.dsqsurvey.com](http://www.dsqsurvey.com)

## CADASTRAL SURVEYS AND LAND DEVELOPMENT

Cadastral surveys are performed to accurately define property boundaries, strata titling, easements and other interests in land.

DSQ has expert project managers who have a proven track record in assisting with the delivery of land development projects including urban and rural land subdivision, building format subdivision, exclusive and community title plans, volumetric subdivision, presales (sales disclosure) plans, building/construction setout and as-constructed surveys. We can take any sized project from the application stage through to issue of new property titles.

DSQ also performs other cadastral surveys including boundary identification surveys, infrastructure resumption surveys, pipeline easement surveys, land leases, retail lease plans, boundary amalgamation surveys and mining survey plans.

DSQ can perform cadastral surveys in Queensland, New South Wales, Victoria, South Australia and Northern Territory.

### THE EQUIPMENT WE CURRENTLY USE

DSQ utilises the latest Robotic Total Station (RTS), Global Navigation Satellite System (GNSS) and digital levelling survey equipment to perform cadastral surveys in accordance with the approved guidelines and regulations in each State of Australia.



# CAPABILITY STATEMENT



For more information visit [www.dsqsurvey.com](http://www.dsqsurvey.com)

## ENGINEERING, ROADS, RAIL & INFRASTRUCTURE SURVEYS

DSQ specialises in engineering surveys for roads, rail & infrastructure surveys. We have extensive experience in providing survey services to the infrastructure sector for the full lifecycle of projects including preliminary investigation and planning, design, construction, operation and decommissioning phases.

Our Services Include:

- Land tenure advice
- Predesign detail surveys
- Route location and Mapping
- Underground utility services surveys
- Boundary rectification
- Easement and resumption surveys
- GIS corridor mapping
- Aerial photography & videography
- Environmental surveys
- Cultural heritage surveys
- Alignment sheet drawing generation
- Project survey control networks and densification
- Construction setout
- Machine guidance systems
- Pipeline special crossing surveys (road, rail, river crossing design)
- Pre & Post Construction Dilapidation Surveys
- As-constructed surveys
- Mining surveys
- Petroleum Well Location (PWL) surveys
- Volume surveys (stockpile, earthworks cut/fill)
- Conformance and deformation reporting

### THE EQUIPMENT WE CURRENTLY USE

DSQ utilises Robotic Total Station (RTS), Global Navigation Satellite System (GNSS), Digital Levels, Unmanned Aerial Vehicles (UAVs), Laser Scanners and Hydrographic Survey equipment to perform these surveys.

We use AutoCad Civil 3D, 12D Model and Esri ArcGIS software to present spatial data.



# CAPABILITY STATEMENT



For more information visit [www.dsqsurvey.com](http://www.dsqsurvey.com)

## GIS, MAPPING & SPATIAL DATA

At DSQ, our Geographic Information Systems (GIS) capabilities deliver cutting-edge spatial solutions through automation, advanced analysis, and accurate data management.

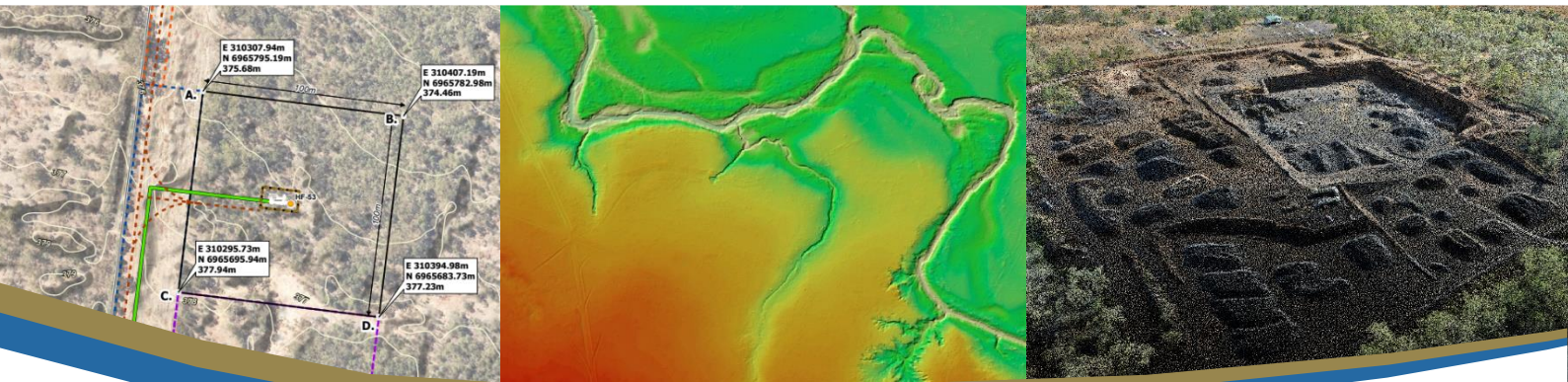
We provide high-quality GIS services that support major industries, ensuring efficiency, accuracy, and seamless integration with engineering and environmental workflows.

### CORE CAPABILITIES

- Spatial analysis and mapping
- Automated data processing and validation
- Asset and inventory management
- Feature extraction from LiDAR and imagery products
- Web-based GIS solutions and field data collection
- Volume reporting, environmental insights, and compliance mapping
- Pre & Post Construction Dilapidation Surveys

### TECHNOLOGY & SOFTWARE

- GIS Platforms: ArcGIS Pro, ArcGIS Online, ESRI Field Apps (Field Maps, Quick Capture, Survey123)
- Data Processing & Automation: FME Flow & Form, LP360 Drone, Trimble Business Centre
- 3D & Remote Sensing: Agisoft Metashape, Global Mapper Pro, Virtual Surveyor



# CAPABILITY STATEMENT



For more information visit [www.dsqsurvey.com](http://www.dsqsurvey.com)

## HYDROGRAPHIC AND BATHYMETRIC SURVEYS

Hydrographic and Bathymetric surveys are performed to map the underwater topography and shoreline of lakes, rivers and oceans.

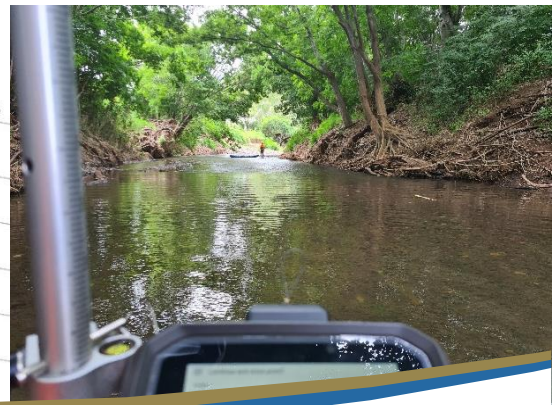
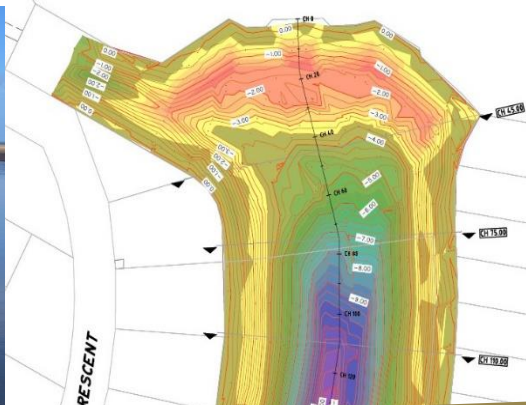
DSQ has expert surveyors with experience in:

- Hydrographic and bathymetric mapping
- Pre & Post dredging clearance surveys
- Channel and entrance surveys
- Beach erosion and monitoring surveys
- Riverbank erosion and stabilisation surveys
- Wharf and channel clearance surveys
- Flood mitigation investigation surveys

### THE EQUIPMENT WE CURRENTLY USE

DSQ utilises Robotic Total Station (RTS), Global Navigation Satellite System (GNSS), Ceeducer echo sounder. We use Hypack software & AutoCad Civil 3D to reduce and present spatial data to perform these surveys.

DSQ has a range of survey vessels to perform hydrographic surveys, depending on the environment and scale of the project. We have small vessels for lakes and rivers, and 5 metre Osprey boat for various inshore and offshore surveys.



# CAPABILITY STATEMENT



For more information visit [www.dsqsurvey.com](http://www.dsqsurvey.com)

## TERRESTRIAL LASER SCANNING

DSQ has expertise in using terrestrial laser scanning (TLS) to provide highly detailed and accurate 3D point cloud data and imaging to deliver comprehensive and precise surveying solutions.

We have experience in a variety of scanning applications, including topographic surveys, volumes, construction monitoring and more.

- Utilizing the Trimble SX10 Scanning Total Station, we capture highly detail point clouds of complex structures and terrains with millimeter accuracy.
- Our TLS systems allow safe and rapid data collecting, allowing us to efficiently capture large amounts of data while ensuring comprehensive coverage of survey areas, and gives us the capability to capture data in areas that would otherwise be inaccessible.
- We employ integrated workflows, combining UAV LiDAR and photogrammetry with TLS to achieve extensive coverage of large and inaccessible areas, providing more complete and accurate survey solutions.
- Our team utilizes Trimble Business Centre for point cloud processing and AutoCAD Civil 3D to reduce and present spatial data; and have the capability to source and employ other software packages and equipment to tailor to our clients' specific needs.



# CAPABILITY STATEMENT



For more information visit [www.dsqsurvey.com](http://www.dsqsurvey.com)

## UNMANNED AERIAL VEHICLES (UAV) & MAPPING SURVEYS

DSQ's Aerial Mapping operations deliver high-precision LiDAR, photogrammetry, and aerial surveying, ensuring accurate spatial data for engineering, construction, and environmental projects. Our CASA-certified remote pilots and GIS specialists provide seamless integration between airborne and ground-based data collection.

### Core Capabilities:

- High-accuracy LiDAR capture and aerial photogrammetry
- 3D modeling, topographic surveys, and volume calculations
- Infrastructure inspections and vegetation encroachment analysis
- Route location and dilapidation surveys
- Erosion, coastal movement and site monitoring
- Strategic partners in the manned aviation sector
- Environmental assessments

### Key Strengths

- High-precision data capture with RTK & PPK solutions
- Accuracy reporting validated by in-house, qualified surveyors
- Fast data processing with automations and quality control
- Seamless integration with GIS and engineering workflows
- Compliance with CASA regulations and industry safety standards
- Extensive experience in energy, infrastructure, and environmental sectors
- Registered Surveyors Endorsement

### THE TECHNOLOGY & EQUIPMENT

- UAV Fleet: DJI M350 RTK, Matrice 4E, Mini 4 Pro
- Payloads: P1 Photogrammetry Camera, GeoCue TV535 LiDAR Sensor
- Processing Software: LP360 Drone, Agisoft Metashape, Global Mapper Pro, UgCS

